

FREEHOLD



House - End Terrace (EPC Rating: C)

**69 WOODSHIRE ROAD, DAGENHAM, RM10  
7DH**

**Guide Price**

**£400,000**

**STEPS**

Estate Agents



3



1



2



C

# 3 Bedroom House - End Terrace located in Dagenham

IMMACULATE THREE BEDROOM HOUSE. Lovely and well presented family house. Good size lounge, separate dining room, fitted kitchen and UPSTAIRS BATHROOM. Fantastic back garden with pagoda, off road parking for TWO CARS. Side access. Guide Price £400,000-£425,000

## ENTRANCE PORCH.

Door to...

## HALLWAY

Two store cupboards.

## LOUNGE

14'6 x 11'3

Bay window to front.

## DINING ROOM

12 x 9

Patio doors to garden, open to ...

## KITCHEN

9'8 x 9

Fully fitted, window overlooking garden.

## LARGE LANDING

Cupboard housing combi boiler, loft access.

## BEDROOM ONE

13 x 10'7

Window to front, new fitted wardrobes to one wall, separate built in cupboard.

## BEDROOM TWO

11 x 10

Built in cupboard, window to rear.

## BEDROOM THREE.

9 x 8

Window to front.

## SHOWER ROOM

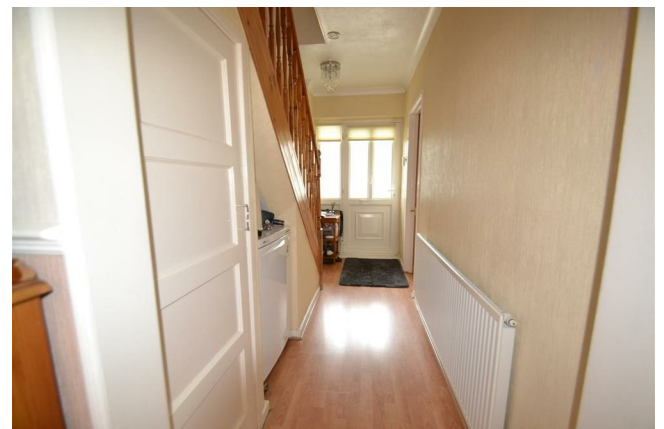
Double length cubicle, basin, window to rear. Separate WC with window.

## EXTERIOR

Paved front driveway, off road parking two cars, tunnel side access to rear.

Fantastic 70' approx back garden, with large patio and pergoda. Lovely lawn and raised flower beds. Two brick sheds with power supply, side gate.

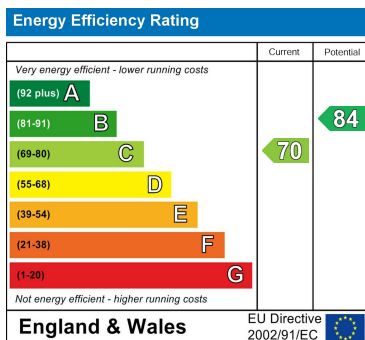
We routinely refer potential purchasers to Move with Us Ltd. It is your decision whether you choose to deal with Move with Us Ltd. In making that decision, you should know that we receive an annual payment benefits from Move with Us Ltd, equating to approximately £314.48 per referral.



Council Tax Band

C

Energy Performance Graph



Call us on

020 8593 5933

[dagenham@steps.me.uk](mailto:dagenham@steps.me.uk)

[www.steps.me.uk](http://www.steps.me.uk)

Agents Note: Whilst every care has been taken to prepare these particulars, they are for guidance purposes only. All measurements are approximate and are for general guidance purposes only and whilst every care has been taken to ensure their accuracy, they should not be relied upon and potential buyers are advised to recheck the measurements.

**STEPS**

Estate Agents